

USING VIBRATION CHARACTERISTICS, DAMAGE EVALUATION OF CONCRETE GRAVITY DAMS

^{1} Subhashree Tripathy, ² Neha Sharma*
^{1} Professor, Dept. of Civil Engineering, NIT BBSR,*
Asst. Professor Dept. of Civil Engineering, REC, BBSR
^{1} subhashree@thenalanda.com, sharmaneha02@gmail.com*

ABSTRACT: Vibration-based Structural Health Monitoring (VBSHM) has become a practical method for long-term monitoring, assessing the performance of civil structures, and determining the extent of damage. Over the past three decades, numerous vibration-based damage detection techniques for structures including buildings and bridges have been developed as a crucial component of the overall VBSHM system. These techniques have, however, only partially been applied to concrete gravity (CG) dams. Damage indices based on alterations in modal flexibility and modal strain energy are appropriately improved in the current work to be relevant for plane-strain structures. They are then employed to examine whether it is possible to identify and locate damage in a finite element model of a CG dam without taking into account noise effects. Findings indicate that by utilising simply the first lateral mode of vibration, the increased damage indices can be effective in locating damage in the upstream portion of CG dams. Furthermore, it's important to keep an

Keywords: Modal flexibility, modal strain energy, damage detection, damage indices, vibration damage de- tection, concrete gravity dams.

1 INTRODUCTION

The community gains a lot from dams and reservoirs, including water supply, flood management, and electricity generation. Sadly, because of dam failures, they also pose one of the biggest potential hazards to public safety, local and regional economies, and the environment. Dam structures may sustain damage throughout the course of their lengthy designed service lives due to unforeseen changes in operational circumstances including catastrophic flooding, earthquakes, and incorrect usage combined with aging-related deterioration. If a dam's initial damage is not discovered, it could progress and cause the dam to fail. So, it is clear that monitoring dam structural performance and identifying the beginning of degradation are necessary. By utilising on-structure, non-destructive sensing technologies, structural health monitoring (SHM) has become a viable tool for this purpose (Chan & Thambiratnam, 2011). A long-term, regular, or ideally continuous monitoring of the structure is required to have a successful SHM strategy. In this regard, vibration-based structural health monitoring (VBSHM), which employs operational and environmental excitations, provides one of the most accurate and economical SHM techniques (Nguyen, 2014). Throughout the past three decades, a significant amount of research on vibration-based damage detection (VBDD) has been carried out in tandem with the advancement of vibration monitoring systems (Fan & Qiao, 2011). The fundamental idea of VBDD techniques is that when damage in a structure becomes reasonably significant, it can cause changes in its dynamic properties (mass, stiffness, and damping), and these in turn will cause detectable changes in the vibration characteristics (such as modal properties) (Doebling et al., 1998; Karbhari & Ansari, 2009; Sohn et al., 2004). Therefore, by assessing changes in modal pa- rameters (frequencies, mode shapes and modal damping), one can assess structural damage in terms of its presence, location and severity. Based on this basic idea, a variety of VBDD-based methods have been proposed. Among them, the techniques based on modal flexibility change (MFC) and changes in modal strain energy (MSE) were explored by a number of researchers for damage locating and esti- mating the severity of damage in beam-like and plate-like structures (Cornwell et al., 1999; Doebling & Farrar, 1996;

Moradipour et al., 2015; Ni et al., 2008; Pandey & Biswas, 1994; Shi et al., 2000; Shih et al., 2009; Norris Stubbs, 1995; N Stubbs et al., 1992; Sung et al., 2014).

The merit of MFC-based damage detection (DD) methods lies on the fact that it combines mode shapes and natural frequencies, which makes it more sensitive to locating the damage compared to methods based on the two separate modal parameters

$$[F]_{N \times N} \approx [M]_{m \times m}^{-1} [K]_{N \times N}^T \quad (1)$$

ω

(Zhao & DeWolf, 1999). In addition, the method can eliminate the necessity of considering higher modes

as the modal flexibility converges rapidly with increasing values of frequency. Therefore, the flexibility matrix can be obtained by measuring only a few early modes of vibration. However, the drawback of this method is that it requires the identified mode shapes to be mass-normalized, which might cause significant difficulties in practice such as the need to have a correct and validated FE model or repeated testing involving mass changes (López Aenlle et al., 2005).

The MSE-based DD method, on the other hand, can avoid the requirement of mode-shape mass normalization which facilitates its application in real structures with modal properties obtained from ambient vibration data (Cornwell et al., 1999). The method has been shown to be more sensitive to damage than other mode shape-based methods. However, it is more affected by noise and incomplete measured data.

Though many VBDD-based methods have been proposed for other civil structures, their application to concrete gravity (CG) dams has been limited. One possible reason for this is that the development of current VBDD-based methods was started from simple structural elements, such as beams and plates, then suitably developed and applied to buildings and

where $\Phi = [\Phi_1, \Phi_2, \dots, \Phi_m]$ is the mode shape matrix; Φ_i is the i^{th} mode shape vector; $\Omega = \text{diag}(\omega^2)$ is the diagonal matrix containing the eigen-frequencies; m is the number of measured modes; and N is the number of measured degree of freedoms (DOFs).

For beam-like and plate-like structures, N is the number of transverse DOFs and can be simply equated to n , where n is the number of measurement points. However, for vertically asymmetrical plane-strain structures such as CG dams, each mode shape vector comprises $2n$ mode shape components (MSC) representing the horizontal and vertical translational DOFs at each point. Therefore, N should be equal to $2n$, and the dimensions of flexibility matrix are $2n \times 2n$ rather than $n \times n$ as can be frequently seen in beam-like or plate-like structures. This requires suitable modifications when adopting the current MFC-based DIs to concrete gravity dams.

Damage in a structure alters its vibration characteristics and increases the flexibility. In the present article, the resulting relative flexibility change matrix between the healthy and the damaged states is adopted for damage location identification of CG dams:

$$\Delta F_{jk} = \frac{F_{jk}^h - F_{jk}^d}{F_{jk}^h} \quad (2)$$

to solid structures such as CG dams can have challenges, especially when dealing with complicated in-

h_{jjk}

$2n \times 2n$

interactions between dam and reservoir, as well as the foundation. In the present study, some existing MFC-based and MSE-based damage indices (DIs) are suitably modified and enhanced to be applicable for plane-strain structures. The feasibility of using the modified DIs for locating damage in a CG dam model is investigated. Various damage scenarios at the upstream face of the dam are introduced to explore damage detection capability of the damage indices based on (i) relative change in modal flexibility ($\Delta F\%$, RFC) and (ii) modal strain energy (Δ^*).

where Δ_{jk} is the relative flexibility change at the k^{th}

DOF causes by changes in flexibility at the j^{th} DOF, h and d denote the healthy and damaged states, respectively. Based on [1], different DIs can be extracted using either the maximum approach (Pandey & Biswas, 1994) and the diagonal approach (Doebling & Farrar, 1996; Ni et al., 2008). With regard to the first approach, for each measurement location k ($k=1, n$), let $\Delta F\%(H+V)_k$ be the maximum value of the two corresponding continuous columns of [1], i.e.,

The damage assessment, at this stage, is conducted without noise effects in modal parameters.

$$\Delta F\%(H+V)_k$$

$$= \frac{\sum_{j=1,2n}^{2k-1} (h_{jj} - d_{jj})}{\sum_{j=1,2n}^{2k-1} h_{jj}}$$

$$\Delta F\%(H+V)_k$$

(3)

2 ENHANCEMENTS OF EXISTING MFC AND MSE-BASED DAMAGE INDICES FOR PLANE STRAIN STRUCTURES

Modal flexibility change damage indices

The modal flexibility matrix $[F]$ can be approximately obtained from low-order measured natural frequencies where “ $H+V$ ” denotes the use of both horizontal and vertical MSC. Regarding the second approach, let $RFC(H+V)_k$ be the greater value among the two corresponding diagonal elements, i.e.,

$$RFC(H+V)_k = \max\{f_{(2k-1)(2k-1)}, f_{(2k)(2k)}\} \quad (4)$$

The DIs in Eq. (3) and (4) demonstrate changes of flexibility for each measurement locations. Therefore peaks should theoretically appear in the corre-

$$f_{ij} = \frac{\partial^2 \delta}{\partial x^2} + \frac{\partial^2 \delta}{\partial y^2}$$

$$\frac{\partial^2 \delta}{\partial x^2} + \frac{\partial^2 \delta}{\partial y^2} = 1 - \nu \frac{\partial^2 \delta}{\partial z^2}$$

Corresponding plot curves.



$$\frac{\partial^2 \delta u_{ij}}{\partial x^2} + \frac{\partial^2 \delta w_{ij}}{\partial z^2}$$

Modal strain energy-based damage index

$$A \frac{\partial^2 \delta u_{ij}}{\partial x^2} + 2 \frac{\partial \delta u_{ij}}{\partial x} \frac{\partial \delta w_{ij}}{\partial z} + \frac{\partial^2 \delta w_{ij}}{\partial z^2}$$

The damage detection method based on changes in modal strain energy was first proposed for beam-like structure (N Stubbs et al., 1992). It was then developed for plate-like structure (Cornwell et al., 1999).

The same relative change algorithm (used in the above modified MFC DIs) is reused to formulate the damage index:

In the present work, the method will be expanded to plane-strain structures to be applicable for CG dams. For a plane-strain problem, the strain energy of a section in XZ plane can be given by:

of a section in XZ plane can be given by:

$$U_{ii} = \int_A \left(\frac{1}{2} \sigma_x \epsilon_x + \sigma_z \epsilon_z + r_{xz} \gamma_{xz} \right) dx dz$$

$$+ 2 \int_A \frac{\partial u_{ij}}{\partial x} \frac{\partial w_{ij}}{\partial z} dx dz$$

section in XZ plane can be given by:

$$-U = \frac{1}{2} \int_A (\sigma_x \epsilon_x + \sigma_z \epsilon_z + r_{xz} \gamma_{xz}) dx dz$$

(5)

It should be noted that the above formulated DI β^* is based on mode shape slopes instead of mode shape curvatures as can be seen in the original DIs developed for beam-like and plate-like structures.

From stress-strain and strain-displacement relationships, the strain energy associated with one particular mode shape i^{th} can be derived from Eq. (5) as follows:

3 APPLICATION TO CG DAM

Finite element model

A CG dam block with fixed foundation and empty reservoir is developed as a Finite Element (FE)

$$U_{ii} = \int_D \left(\frac{1}{2} \sigma_x \epsilon_x + \sigma_z \epsilon_z + r_{xz} \gamma_{xz} \right) dx dz + 2 \int_D \frac{\partial u_{ij}}{\partial x} \frac{\partial w_{ij}}{\partial z} dx dz$$

model (Figure 1). The dam is treated as a plane-strain structure and its modal frequencies (Table 1)

A

∂z

$$1 - \beta^*$$

∂u_{ij}

$$\frac{\partial^2 w_{ij}}{\partial x^2} + \frac{\partial^2 w_{ij}}{\partial z^2} = 0 \quad (6)$$

and mode shapes (Figure 2) are obtained using the FE software package SAP2000. These vibration

$$\frac{\partial^2 u_i}{\partial x^2} + \frac{\partial^2 u_i}{\partial z^2} = 0$$

characteristics will represent the undamaged state of the structure. The FE model will then be analyzed with different damage scenarios in order to deter-

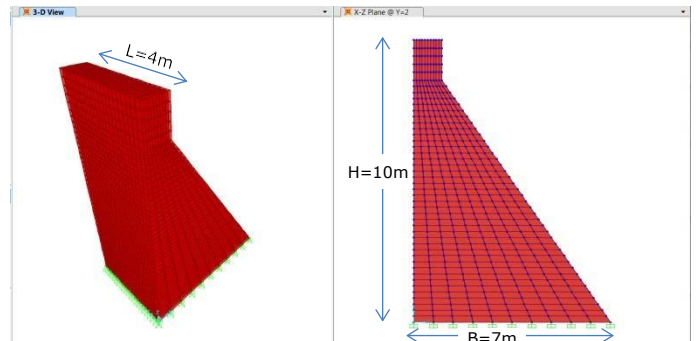
mine the modal parameters in the damaged states. where $D = E^* / (1 - \nu^{*2})$ represents for the stiffness of the structure, $E^* = E / (1 - \nu^{*2})$ and $\nu^* = \nu / (1 - \nu)$ = modified (or effective) Young's modulus and Poisson's ratio respectively, $u_i(x, z)$ and $w_i(x, z)$ = the i^{th} horizontal and vertical MSC respectively, A = the area of the plane section. If A is divided into N sub-regions then the associated sub-region energy for the mode i^{th} is

given by:

mine the modal parameters in the damaged states.

The dam is of concrete with a height of 10m, a base width of 7m and a (longitudinal) length of 4m. The Young's Modulus, Poisson's ratio and mass density for the dam structure are 25GPa, 0.2 and 2400kg/m³ respectively.

$$U_{ij} = \frac{D_{jj}}{2} \int \left(\frac{\partial u_{ij}}{\partial x} \right)^2 + \left(\frac{\partial w_{ij}}{\partial x} \right)^2 + 2\nu^* \frac{\partial u_{ij}}{\partial x} \frac{\partial w_{ij}}{\partial x} + \frac{A_{jj}}{2} \int \left(\frac{\partial u_{ij}}{\partial z} \right)^2 + \left(\frac{\partial w_{ij}}{\partial z} \right)^2 + 2\nu^* \frac{\partial u_{ij}}{\partial z} \frac{\partial w_{ij}}{\partial z} \quad (7)$$



$$\frac{\partial^2 \phi}{\partial x^2} + \frac{\partial^2 \phi}{\partial z^2} = 0$$

The corresponding damage index account for m measured modes can be defined using the same concept with that of beam-like and plate-like structures

Figure 1. The FE model of the concrete dam block structure Table 1. Modal frequencies (undamaged state)

(Cornwell et al., 1999) and is given by: Mode number

Frequency (Hz)	Dominant vibration direction
1	Lateral
2	Vertical
3	Vertical

where

2	83.10	Lateral
3	112.25	Vertical

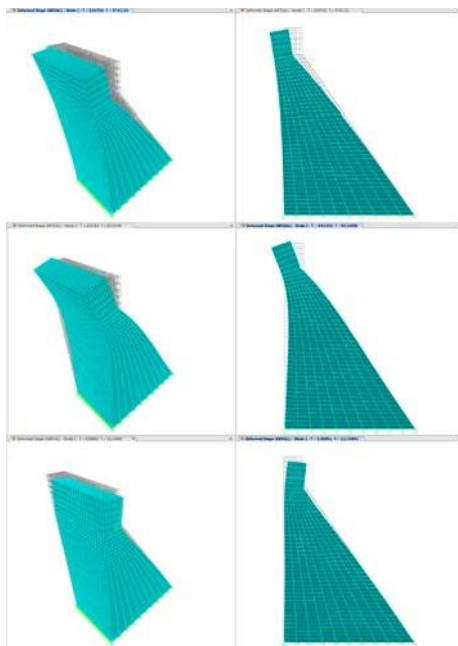


Figure 2. Three first mode shapes in the undamaged state

Damage scenarios

Upstream face and lower part of the dam are the most vulnerable parts of concrete gravity dams under operational conditions. Damage scenarios are then introduced on elements in the corresponding parts of the FE model. Damage is simulated by reducing the material Young's modulus by 20%. Dimensions of the damaged elements are approximate 2% of the dam height, 5% of the dam length, and 10% of the dam width.

It is very difficult to monitor all sections of the dam, especially in the most vulnerable parts. One possible solution is to assess changes in vibration characteristics at some sections in order to predict the relative damage areas. The present study will examine upstream joints in three sections S1, S2 and S3 (Figure 3). Three damage cases were created in the model including single and multiple damaged positions. The damage is in section S2 in damage cases 1 and 3, while in the damage case 2 it lies far away from the three measurement sections.

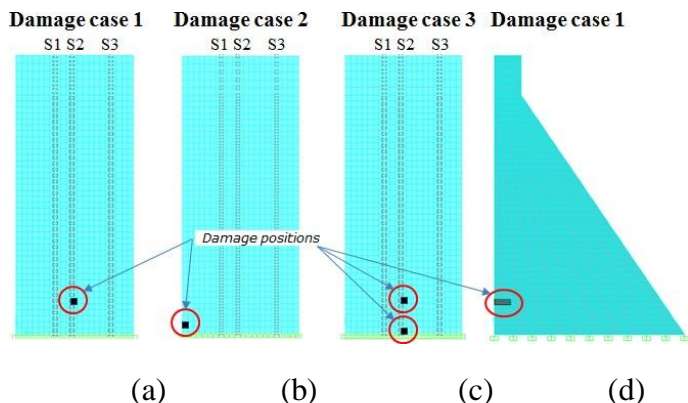


Figure 3. Damage scenarios viewed from upstream face (a, b, c) and in cross section (d)

4 DAMAGE DIANOSIS BY THE ENHANCEDDAMAGE INDICES USING THE FIRST LATERAL MODE

In all damage diagnosis cases below, only the first lateral mode is used.

Damage case 1: single damage at 1m above the dam's base, lying on section S2

Figure 4 shows the plots of $\Delta F\%(H+V)$ and $RFC(H+V)$ that account for both horizontal and vertical MSC, and of $\Delta F\%(H)$ which accounts for just the horizontal MSC. Similarly, Figure 5 illustrates the $\Delta F\%(H+V)$ and $\Delta F\%(H)$ values for the first damage scenario. It can be seen that all DIs using both MSC components accurately predict the damage location, while those using only the horizontal MSC give relatively less definite results.

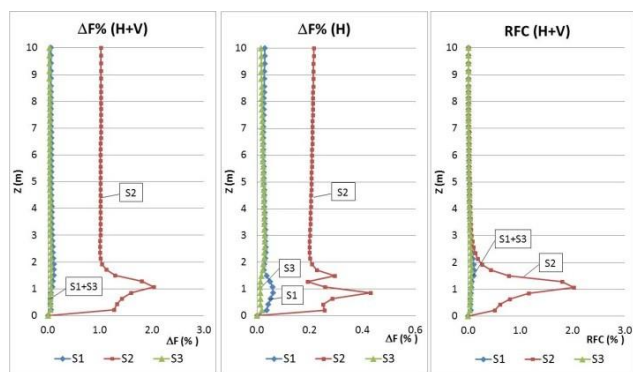


Figure 4. Flexibility damage indices – Damage case 1

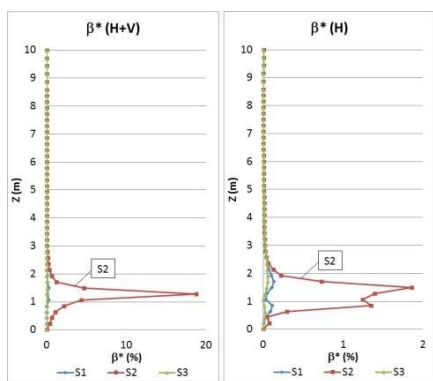


Figure 5. Modal strain energy damage indices – Damage case 1

Damage case 2: single damage at 0.1m above the dam's bottom, lying far away from the measurement sections.

Figure 6 and Figure 7 illustrate the plots of the damage indices for the second damage scenario. It can be seen that all DIs can provide evidence of relatively reduced flexibility of section 1 (nearest to damage) and the relative location of the damage. As the damage is nearer to section S1 than S2 and S3, the intensity of the DIs is highest at section S1, then S2 and least at S3. These results will direct the engineers to move forward the section to be further investigated for damage detection. They also provide a promising platform for practical damage detection in CG dams when the higher mode shapes at upstream-face elements are difficult to measure.

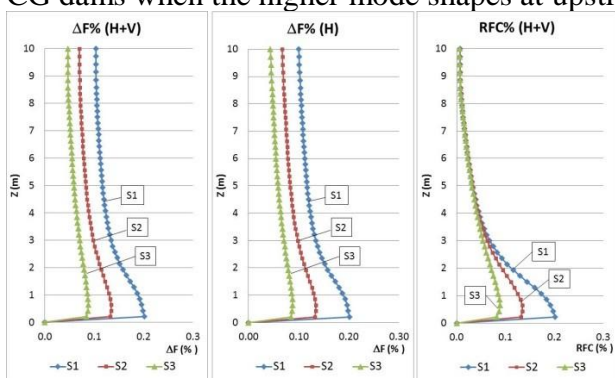


Figure 6. Flexibility damage indices – Damage case 2

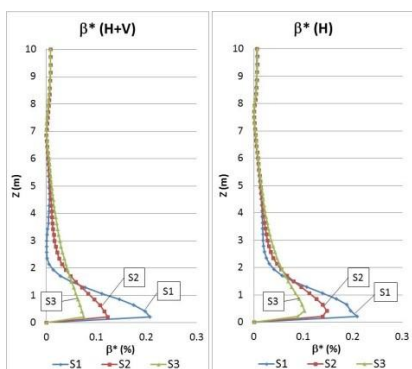


Figure 7. Modal strain energy damage indices – Damage case 2

Damage case 3: multiple damage positions lying on section S2 (one at the dam bottom, the other at 1m above)

In this damage scenario, the flexibility DIs just can provide dominant peaks at the lower damage

location and less prominent peaks at the upper damage location as seen in Figure 8.

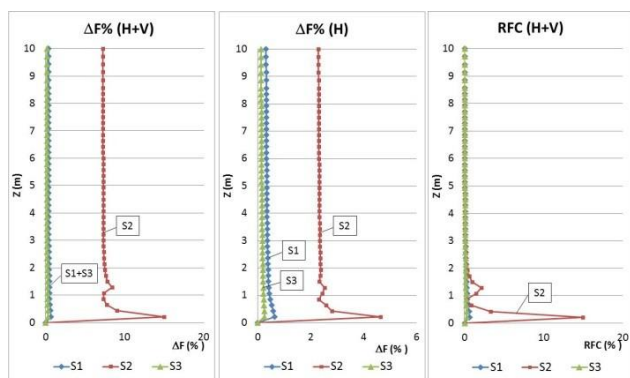


Figure 8. Flexibility damage indices – Damage case 3

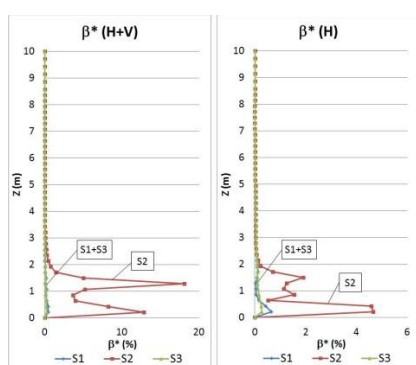


Figure 9. Modal strain energy damage indices – Damage case 3

On the other hand, the modal strain energy (MSE) DIs can provide clear peaks at both damage positions (Figure 9). In addition, it can be seen that the use of both horizontal and vertical MSCs provide better damage indicators.

5 CONCLUSION

This paper treats the damage assessment in a concrete gravity dam using vibration characteristics. Suitable modifications and enhancements have been made to the existing MFC and MSE-based DIs to be applicable for plane-strain structures such as concrete gravity dams. The effectiveness of these DIs in identifying the damage location was investigated in a theoretical FE model for single and multiple damage scenarios. The following conclusions are drawn from this study: (1) All the enhanced DIs based on changes in modal flexibility [$\Delta F\%(H+V)$ and $RFC(H+V)$] and strain energy [$\beta^*(H+V)$] can accurately locate single and multiple damage that lie on one of the measurement sections; (2) In the case when damage does not lie on the measured sections, the enhanced DIs are still able to provide information for identifying the damaged section and the damage location; (3) Only the first lateral mode is required in all damage scenarios; (4) In most of the damage cases, DIs using both horizontal and vertical MSC accurately predict the damage location, while those using only the horizontal MSC give relatively less definite results

REFERENCES

Stubbs, N., Kim, J., & Topole, K. (1992). *An efficient and robust algorithm for damage localization in offshore platforms*. Paper presented at the Proceedings of the ASCE Tenth Structures Congress.

- Pandey, A. K., & Biswas, M. (1994). Damage detection in structures using changes in flexibility. *Journal of Sound and Vibration*, 169(1), 3-17.
- Stubbs, N. (1995). Field verification of a nondestructive damage localization and severity estimation algorithm.
- Doebling, S. W., & Farrar, C. R. (1996). *Computation of structural flexibility for bridge health monitoring using ambient modal data*. Paper presented at the Proceedings of the 11th ASCE Engineering Mechanics Conference.
- Doebling, S. W., Farrar, C. R., & Prime, M. B. (1998). A summary review of vibration- based damage identification methods. *Shock and vibration digest*, 30(2), 91-105.
- Cornwell, P., Doebling, S. W., & Farrar, C. R. (1999). Application of the strain energy damage detection method to plate-like structures. *Journal of Sound and Vibration*, 224(2), 359-374.
- Zhao, J., & DeWolf, J. T. (1999). Sensitivity Study for Vibrational Parameters Used in Damage Detection. *Journal of Structural Engineering*, 125(4), 410-416.
- Shi, Z., Law, S., & Zhang, L. M. (2000). Structural damage detection from modal strain energy change. *Journal of engineering mechanics*, 126(12), 1216-1223.
- Sohn, H., Farrar, C. R., Hemez, F. M., Shunk, D. D., Stinemates, D. W., Nadler, B. R., & Czarnecki, J. J. (2004). *A review of structural health monitoring literature: 1996-2001*: Los Alamos National Laboratory Los Alamos, NM.
- López Aenlle, M., Brincker, R., & Fernández Canteli, A. C. (2005). Some methods to determine scaled mode shapes in natural input modal analysis.
- Ni, Y., Zhou, H., Chan, K., & Ko, J. (2008). Modal Flexibility Analysis of Cable-Stayed Ting Kau Bridge for Damage Identification. *Computer-Aided Civil and Infrastructure Engineering*, 23(3), 223-236.
- Karbhari, V. M., & Ansari, F. (2009). *Structural health monitoring of civil infrastructure systems*: Elsevier.
- Shih, H. W., Thambiratnam, D. P., & Chan, T. H. T. (2009). Vibration based structural damage detection in flexural members using multi- criteria approach. *Journal of Sound and Vibration*, 323(3), 645-661.
- Fan, W., & Qiao, P. (2011). Vibration-based damage identification methods: a review and comparative study. *Structural Health Monitoring*, 10(1), 83-111.
- Nguyen, T. (2014). *SHM through flexible vibration sensing technologies and robust safety evaluation paradigm*. (Dissertation/Thesis), Queensland University of Technology.
- Sung, S., Koo, K., & Jung, H. (2014). Modal flexibility-based damage detection of cantilever beam-type structures using baseline modification. *Journal of Sound and Vibration*, 333(18), 4123-4138.
- Moradipour, P., Chan, T. H., & Gallage, C. (2015). An improved modal strain energy method for structural damage detection, 2D simulation. *Structural Engineering and Mechanics*, 54(1), 105-119.