

## A Temperature-Based Hysteresis Buck Converter for Dynamic Current Sharing

<sup>1\*</sup> Mr. Bikash Kumar Swain, <sup>2</sup> Mr. Ajit ku Mohapatra

<sup>1\*</sup> Asst. Professor, Dept. Of Electrical Engineering, NIT BBSR,

Asst. Professor DEPT. of Electrical Engineering, NIT BBSR,

<sup>1\*</sup>[bikashkumar@thenalanda.com](mailto:bikashkumar@thenalanda.com), [ajit@thenalanda.com](mailto:ajit@thenalanda.com)

### Abstract

In order to increase the dependability of uninterruptible power systems, a temperature-based current-sharing technique rather than equal sharing for loads was used in this study (UPS). It would be preferable to lower the output current ratio for a hotter supply module in the UPS based on the temperature of each power supply module in the UPS. Our regulation circuits were implemented in this design using UMC 0.25- $\mu$ m CMOS technology, with the regulated output set at 1.1 V and an input range of 3 V to 4.2 V. The rated output current was 100 mA for each phase. We also employed a current-mode error-correction circuit to improve the current sharing performance based on the averaged current of each phase at the same temperature. According to our simulation results, the current sharing error can be restricted within  $\pm 5\%$  for the supply modules at the same temperature in our system.

### Keywords

Load Current Sharing, Uninterruptible Power Systems, UPS, Voltage Regulator, Temperature-Based Sharing

---

## 1. Introduction

A system with many power supply modules connected in parallel for heavy-load power supply systems may offer several benefits [1] [2] [3]. A set of smaller modules can support a larger load with this architecture, and because it contains redundant features, it would increase the system's dependability. As a result, it is frequently preferred in UPSs for circumstances with significant loads, like as computer servers. For this configuration, the challenge in

the design of the power supplies comes to the design of current sharing function to ensure each power supply works correctly. There are many current sharing methods proposed in recent years, such as the droop or average current method [4]. But the droop method suffers poor transfer efficiency. On the other hand, it needs an extra current reference for the average current method which makes the circuit more complex.

Recently, a simple current sharing method was proposed for multiphase voltage control to achieve good current sharing performance [5] without the current reference. They employed multiple power modules to supply a stable voltage output. The primary challenge in design

of parallel power supplies is its current sharing performance. For practical considerations, the power supplies in UPS suffer different thermal effects while sharing the load current equally. This fact would degrade the lifetime of the power supply with a higher temperature in this system. In our design, we proposed an additional auxiliary circuit to solve this problem to achieve more reliable current sharing performance.

The thermal effect in UPS arises from the fact that the temperature of the power supply module on the top of a power shelf is usually higher than the bottom one. Because of the thermal convection, the generated heat from all the power supplies would accumulate at the top in the shelf. Therefore, the top module suffers higher temperature than the others. If all the power modules share the same current output, the module suffering higher temperature would exhibit poor reliability. According to general phenomena, the failure rate of a power device would get doubled for every 10°C increase in temperature. Therefore, the reliability of the whole power system would degrade 50% in life time even with only one power supply getting its temperature raised by 10°C. To solve this problem, we proposed a method by detecting the temperature of each power module in each phase to redistribute the current ratio. With this scheme, the hot power module supply would share a lower current to cool down itself with an aim to achieve a better balance of the failure rate for each module in the UPS.

## 2. Circuit Design

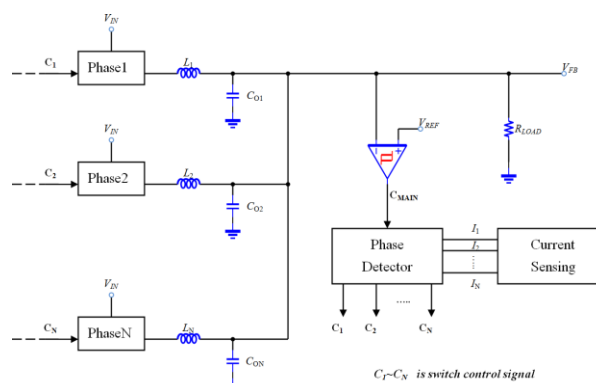
From the fundamental circuit proposed in [5], the circuit structure was modified. Chip function blocks are displayed in Figure 1. Two power supply modules are shown sharing a single load, RLOAD, in Figure 1(a). A power supply module's circuit details are shown in Figure 1(b). The fundamental framework in [5] was supplemented by several additional features, such as an auxiliary circuit for improved current sharing performance and a temperature-based current sharing controller for improved UPS reliability. The specifics of these function circuits will be covered in the next subsections.

### Current Sharing Method

For conventional designs, the average current sharing method and the droop current sharing method are usually employed. **Figure 2** shows the scheme of the

(a) (b)

**Figure 1.** Schematics of (a) the configuration of power supply modules; (b) the function blocks of a power supply module.



**Figure 2.** Scheme of the multi-phase current sharing method.

N-phase current sharing method purposed by [5]. In our study, we would add a thermal controller and an error correction circuit as in **Figure 1(b)** to modify the sharing ratio at different temperatures.

In our study, only 2 phases were employed. Unlike the conventional sensing of the load current through a small resistor, in our circuit, the current information at the load was directly sensed at each phase. After comparison, our circuit would turn on the phase with the lower current if the two modules were at the same temperature. The advantage of this sharing method is that its response would be faster. In the meanwhile, the disadvantage of this scheme is that it would generate an error between the sharing currents of the two phases due to the turn-on times of the two phases were different. For this issue, the output current of each module will revise when the error accumulated over the ripple in the load current. The criterion to change the sharing ratio will be discussed in the later section.

Taking the circuit in **Figure 2** as a two-phase dc-dc converter structure as the example, the operation waveform can be depicted in **Figure 3**. When the output  $V_{FB}$ , it also is the feedback voltage, approached the lower limit of the hysteresis window,  $V_{TL}$ , the control signal  $C_{MAIN}$  will be set high to turn on the selected power supply. By sensing the current of each phase, this circuit needs to deter-

**Figure 3.** Waveforms of the current sharing of a two-phase system from **Figure 2**.

mine which phase provides lower current. By a control scheme to turn on the suitable module, a reliable current sharing can be achieved. Our design of the control scheme will be described in the next section.

### Current Correction Scheme

In the design of the current error correction circuit, we have to know how much error will generate at each switching cycle. According to the error, the turn-on time of the power supply module having lower current phase need to be extended. And the turn-on time of the module having higher output current should be reduced.

In our circuit, the error of between the currents of the two phases in each switching cycle was estimated. After the accumulated current error was higher than a criterion, the controller would trigger the correction circuit to change the turn-on times for both phases. **Figure 4** illustrated the currents of the two phases before correction. In this figure, the accumulated error can be up to 20 mA.

In our study, when one phase supplied more current than the other one, its current would be reduced by decreasing its turn-on time. For this purpose, we designed an auxiliary current source to help the decreasing process faster. The auxiliary current source is marked by the block in **Figure 5**. The control circuit is shown in **Figure 6** [6] [7].

As seen in **Figure 5** and **Figure 6**, when a phase supplies more current to the

load, the auxiliary current source will react to reduce the on time. For this purpose, we needed the auxiliary current source to sense the current information of each phase. In our design, the current information of each phase was sampled by directly coupling the current to charge a capacitor within a sampling cycle [8]. This sampling cycle was set to be two switching cycles which would cover the same one switch-on and three times of switching off for both phases. Based on the design of a two-phase power supply from Figure 2, the current sampling circuit and driving circuit for the auxiliary current source was included in our circuit and is illustrated in Figure 6.

### Simulation at the Same Temperature

The simulation results of this circuit without and with the correction circuit can be seen in Figure 7 and Figure 8, respectively. By comparing the errors in both

Figure 4. Accumulation of current error without error correction circuit.

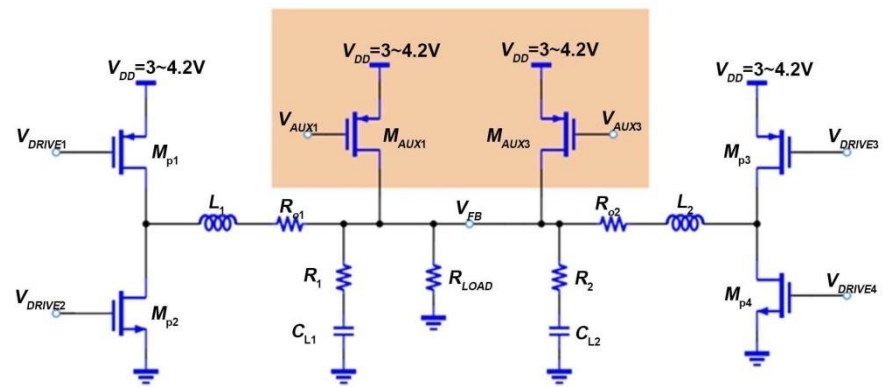


Figure 5. Auxiliary current source.

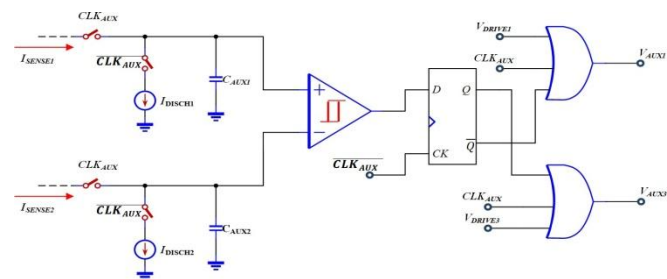
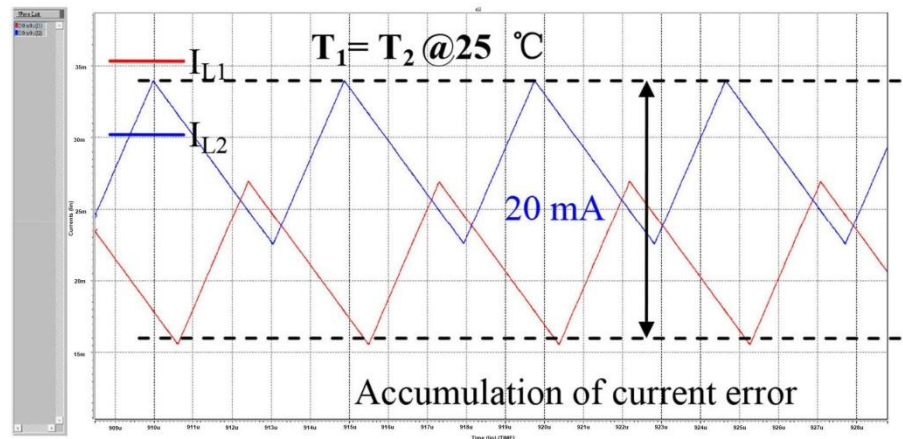


Figure 6. Current sampling and control circuit for the auxiliary current source.

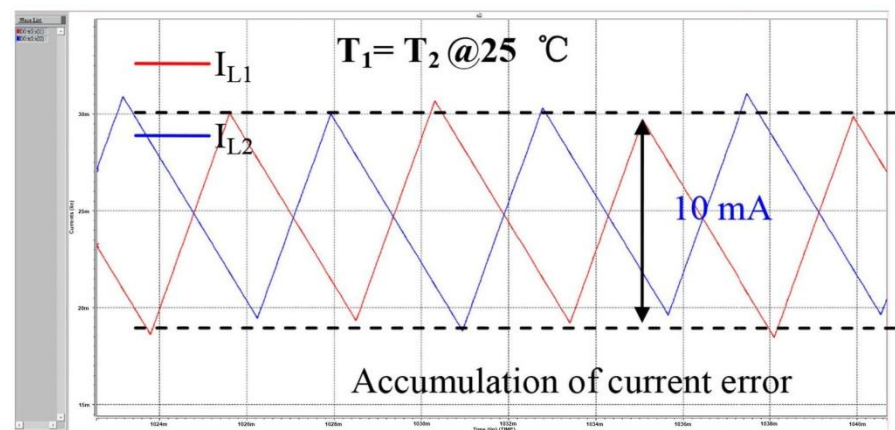
figures, it can be found that the current sharing performance is improved significantly with the help of the auxiliary circuit. According to this simulation results, the current sharing error can be restricted within  $\pm 5\%$  in our system. Due to the correction scheme, the auxiliary circuit can reduce output noises which can be caused by large current drop in each phase without the correction scheme.

### Temperature-Based Current Sharing Control

In our study, the conventional design of the power supply module to equally share the load current is not ideal for practical operations. In practical applications,



**Figure 7.** Waveforms of the two output currents for a load current of 50 mA without the auxiliary circuit.



**Figure 8.** Waveforms of the two output currents of our circuit with the auxiliary circuit for a load current of 50 mA.

the reliability of an electronic device, especially for a power device, is closely related to the thermal effect. Since the temperatures of the power modules are different in a power case due to the non-uniform distribution of heats accumulated by all the power modules in the case. Therefore, every power module suffers different temperature even they share the load equally. In our study, we would like to propose a new scheme of current sharing control depending on itself temperature of a power module. In the control circuit, the load of a power supply module having higher temperature was reduced by decreasing its turn-on time such that the reliability of the whole system can be extended significantly. Therefore, the current sharing scheme was no longer just 50% for both phases. Instead, the sharing ratio of each module would change depending on the temperature of itself.

To achieve this object, a circuit sensing the temperature of each phase was proposed as shown in **Figure 9**. In this figure, the BJT is employed as the temperature sensor for each phase. Its emitter current is a function of the temperature. By compare the temperature sensitive current which reflects the temperature of each phase, the phase at the higher temperature would be determined.

**Figure 9.** Temperature sensing circuit.

To redistribute the current sharing ratio for each phase of different temperature, an addition control signal relevant to the temperature information of each phase was required.

To achieve this target, the current difference affected by the temperature was utilized at the input of the current comparator in **Figure 6**. As seen in **Figure 1(a)**, the feedback  $V_{FB}$  is cross coupled from the other module. With this mechanism of cross-coupled feedback, the input currents,  $I_{SENSE1}$  and  $I_{SENSE2}$ , at the input of the current comparator will approach to be the same such that the two modules would share the same load current.

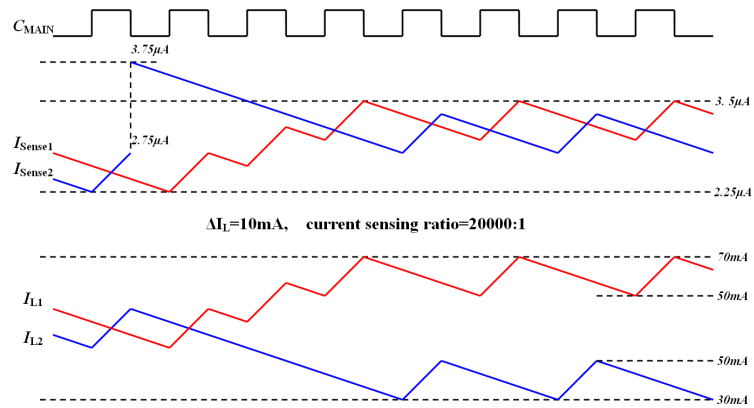
In order to change the ratio between  $I_{SENSE1}$  and  $I_{SENSE2}$  and according to the temperature difference between the two power modules, we added two additional currents,  $I_{DISCH1}$  and  $I_{DISCH2}$ , as in **Figure 6** before the current comparator. The additional  $I_{DISCH1}$  and  $I_{DISCH2}$  are temperature dependent mirrored currents from the temperature sensing circuits of the two phases as shown in **Figure 9**. With this design, our circuit will make  $I_{SENSE1}$  and  $I_{SENSE2}$  unequal if the temperatures of the two phases are different. The effect of temperature dependent  $I_{DISCH}$  on the sensing current  $I_{SENSE}$  and the load current  $I_L$  is depicted in **Figure 10**. In addition, the operating waveforms of these signals are shown in **Figure 11**.

### 3. Results and Discussion

In this study, we designed our circuit based on UMC 0.25  $\mu\text{m}$  2P3M CMOS technology. As seen in **Figure 1**, the input voltage,  $V_{IN}$ , was selected in the range from 3 V to 4.2 V. The regulated output voltage,  $V_{OUT}$ , of each phase was set at

1.1 V. The switching frequency at no load was 250 KHz. The maximum output current,  $I_{LOAD}$  over  $R_{LOAD}$  was 100 mA. The switching frequency was changed depending on the load current which was determined by the inductors,  $L_1$  and  $L_2$ , and the output capacitors  $C_{L1}$  and  $C_{L2}$ . In this design the inductors were selected as 300  $\mu\text{H}$ , the output capacitors 10  $\mu\text{F}$  and the output resistors 8  $\Omega$ , respectively. **Figure 12** demonstrates the waveforms of the output currents and the switching control in a scenario that the load current changed from a light load of

**Figure 10.** Effect of the additional current,  $I_{DISCH}$ , on the current sharing at the load.

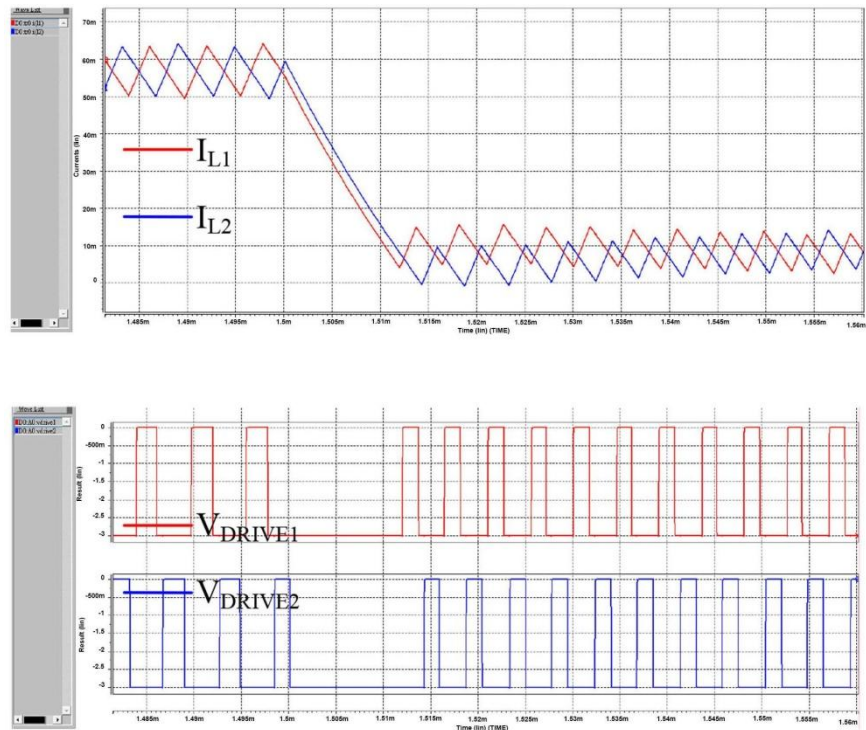


**Figure 11.** Operating waveforms of the sensing currents  $I_{SENSE1}$  and  $I_{SENSE2}$  and the load currents  $I_{L1}$  and  $I_{L2}$  due to an additional current of  $1 \mu\text{A}$  between  $I_{DISCH1}$  and  $I_{DISCH2}$ .

20 mA to the middle load, 100 mA. **Figure 13** demonstrates the transient wave-forms from the same middle load to the light load, 20 mA. According to both results, the stability of our system can be confirmed for switching between dif-ferent load currents.

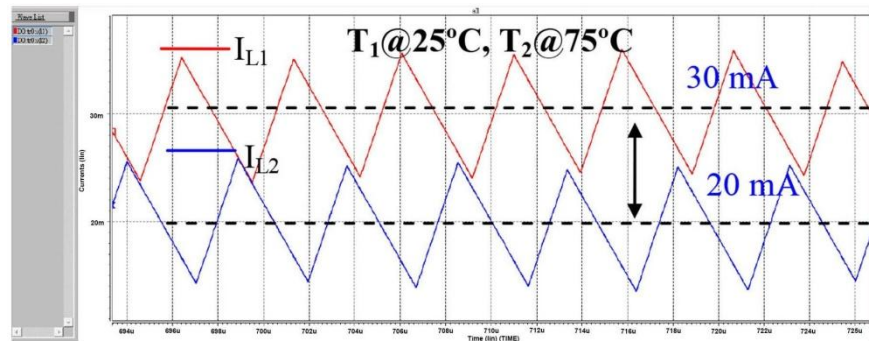
**Figure 14** and **Figure 15** show the balanced waveforms for both modules at two different temperatures. In this case, we set the total load current as 50 mA. In **Figure 14**, the phase 1 has a lower temperature than that of the phase 2, one can notice that the output current of module 2 would increase up to 30 mA to share more loadings. In the meanwhile, phase 2 having a higher temperature may share a lighter load which would reduce the increasing rate of its tempera-ture. The case with the two temperatures of both modules interchanged was also verified for its symmetrical operation. In **Figure 15**, the same data can be found but interchanged for phase 2 has a lower temperature. According to both figures, the temperature-dependent control in our circuit was also confirmed. Since the

**Figure 12.** Transient response of the load currents from 20 mA to 100 mA.

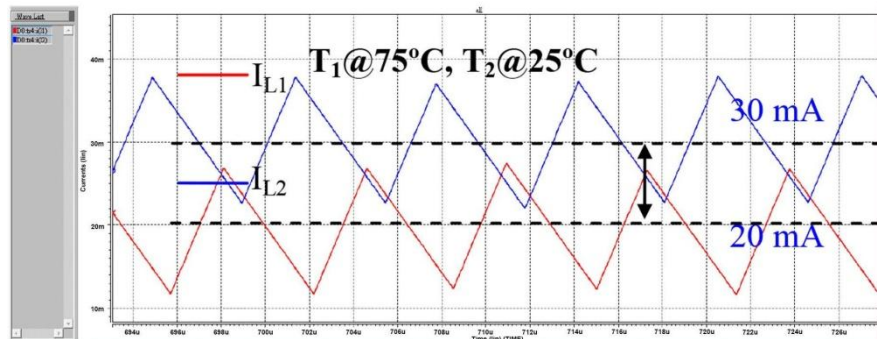


**Figure 13.** Transient response of the load currents from 100 mA back to 20 mA.

temperature of the phase offering larger current would increase faster than that of the other one, the ultimate result may be the case that the temperatures of



**Figure 14.** Waveforms of the balanced output currents with a presumption for phase1 at 25°C, phase 2 75°C.





**Figure 15.** Waveforms of the balanced output currents with a presumption for phase1 at 75°C, phase 2 25°C.

both modules approach to almost the same to each other. In this case, the output current would be equivalently shared by both modules. Therefore, it can be expected that the reliability of the multiphase power supply can be improved significantly.

#### 4. Conclusion

In order to enhance the performance of the current sharing, we provide a new current correcting circuit in this study. A temperature sensor circuit also takes into account the impact of temperature while adjusting the current ratio for the power modules. For better thermal balance in our circuit, the hotter power source would share a lower ratio for the load current. Since the unbalanced current sharing is affected by the temperature difference, the whole system may arise another feedback mechanism between the load sharing ratio and the temperature difference. It is of theoretical interests to investigate on the interaction between the current ratio and the temperature difference for practical systems. In our primary figuring, since the temperature changes very slow, it was expected that the ultimate condition is the temperature difference reduced to 0. Nevertheless, the temperature-based sharing is beneficial for the lifetime of a power system. For heavy load applications, it is promising in our study that the parallel connected multiple phase power supply with temperature-base sharing can be feasible.

#### References

- [1] Shiau, M.-S. and Hung, C.-C. (2017) Switching Power Supply Apparatus that Incorporate the Same. US Patent No. 9698702B1.
- [2] Nesgaard, C. and Andersen, M.A.E. (2004) Optimized Load Sharing Control by means of Thermal Reliability Management. *35th Annual IEEE Power Electronics Specialists Conference*, **6**, 4901-4906. <https://doi.org/10.1109/PESC.2004.1354866>
- [3] Nesgaard, C. and Andersen, M.A.E. (2004) Efficiency Improvement in Redundant Power Systems by Means of Thermal Load Sharing. *Applied Power Electronics Conference and Exposition*, **1**, 433-439.
- [4] Shuai, Z., Mo, S., Wang, J., Shen, Z.J., Tian, W. and Feng, Y. (2016) Droop Control Method for Load Share and Voltage Regulation in High-Voltage Microgrids. *Journal of Modern Power Systems and Clean Energy*, **4**, 76-86. <https://doi.org/10.1007/s40565-015-0176-1>
- [5] Abu-Qahouq, J., Mao, H. and Batarseh, I. (2004) Multiphase Voltage-Mode Hysteric Controlled DC-DC Converter with Novel Current Sharing. *IEEE Transactions on Power Electronics*, **19**, 1397-1407. <https://doi.org/10.1109/TPEL.2004.836639>
- [6] Solis, J.E.M., Navarro, M.G., Mejia, I., Lozano, R.Z.G., Rojas, F.L., Hidalgo, J.O. and del Toro,

- H.B. (2016) Low Input Resistance CMOS Current Comparator Based on the FVF for Low-Power Applications. *Canadian Journal of Electrical and Computer Engineering*, **39**, 127-131.
- [7] Hsu, W.J. (2015) Single-Inductor Dual-Buck-Output DC-DC Converter Using Constant On-Time Based on Power-Distributive Control. Master Thesis, Institute of Electronic Engineering, Feng Chia University, Taiwan.
- [8] Chen, J.-J., Lin, Y.-T., Lin, H.-Y., Su, J.-H., Chung, W.-Y., Hwang, Y.-S. and Tseng, C.-L. (2005) On-Chip Current Sensing Techniques for Hysteresis Current Controlled DC-DC Converters. *Electronics Letters*, **41**, 95-97. <https://doi.org/10.1049/el:20056807>